

site plan with pavilions highlighted in red

ASHES TO ASHES

Two gateway pavilions help define Potters' Fields Park on London's thriving south bank.

Potters' Fields Park is one of only a few green spaces on London's south bank, situated opposite the Tower of London, in-between Tower Bridge and City Hall. The brief was to design a pair of gateway pavilions as entrances to the Park: Parkside, to the south of City Hall, containing restaurant, public conveniences, ATMs, and curiously, existing vent shafts and a garage for the City Hall's window-cleaning crane. And Blossom Square, in the shadow of Tower Bridge, that provides retail facilities, a sheltered seating area and park store. Conceived as grottoes, their

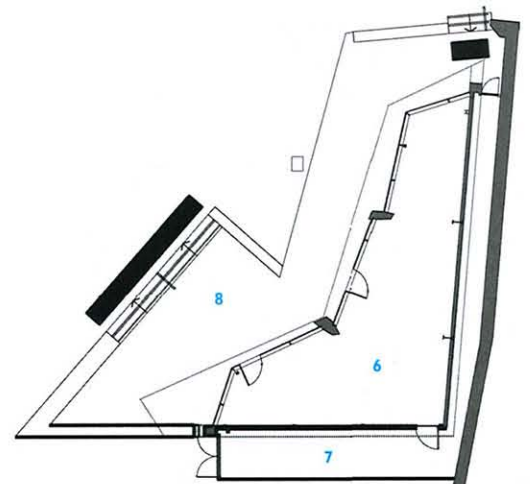
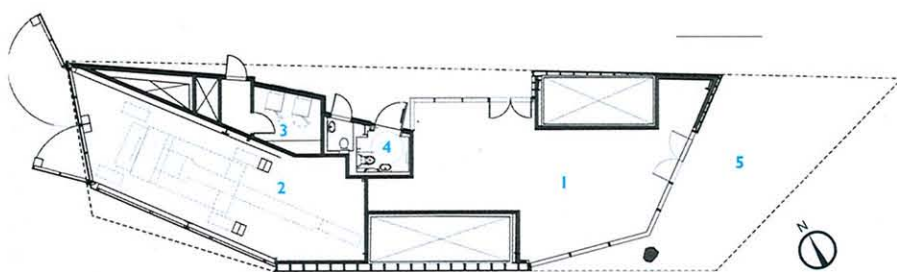
carved form was derived from movement and view analysis, and the colour of Parkside responds to the strong tradition of setting dark, timber-clad buildings within the parks of London. This, however, was not achieved simply by drenching it in sticky black creosote, but rather the colour is embedded in the material itself: flamed Siberian larch. Produced using an industrial blowtorch, the architects experimented with various techniques in their own front yard. Eventually a three-phase method was used, whereby the timber was washed down (to remove

carbon residue) and left to cool and settle between two flame applications. The final effect not only gives the buildings a natural patina, but also provides a preservative for the timber, subsequently discovered by the architect to closely resemble the ancient Japanese technique, Yakisugi. R. G.

Architect
DSDHA, London
Structural engineer
Jane Wernick Associates, Gross Max
Services engineer
Arup
Photographs
Hélène Binet

HONOURABLE MENTION
GARDEN PAVILIONS,
POTTERS' FIELDS,
LONDON
ARCHITECT
DSDHA

- 1 restaurant
- 2 garage for cherry picker
- 3 ATM room
- 4 lavatory
- 5 covered seating area
- 6 retail unit
- 7 park keeper's store
- 8 seating area





1
Parkside to
the west is
clad in flamed
larch, recalling
memories of
the war-time
devastation of
the site.

2
Blossom Square
to the east
provides space for
retail and includes
a sheltered
seating area.